



### Materials

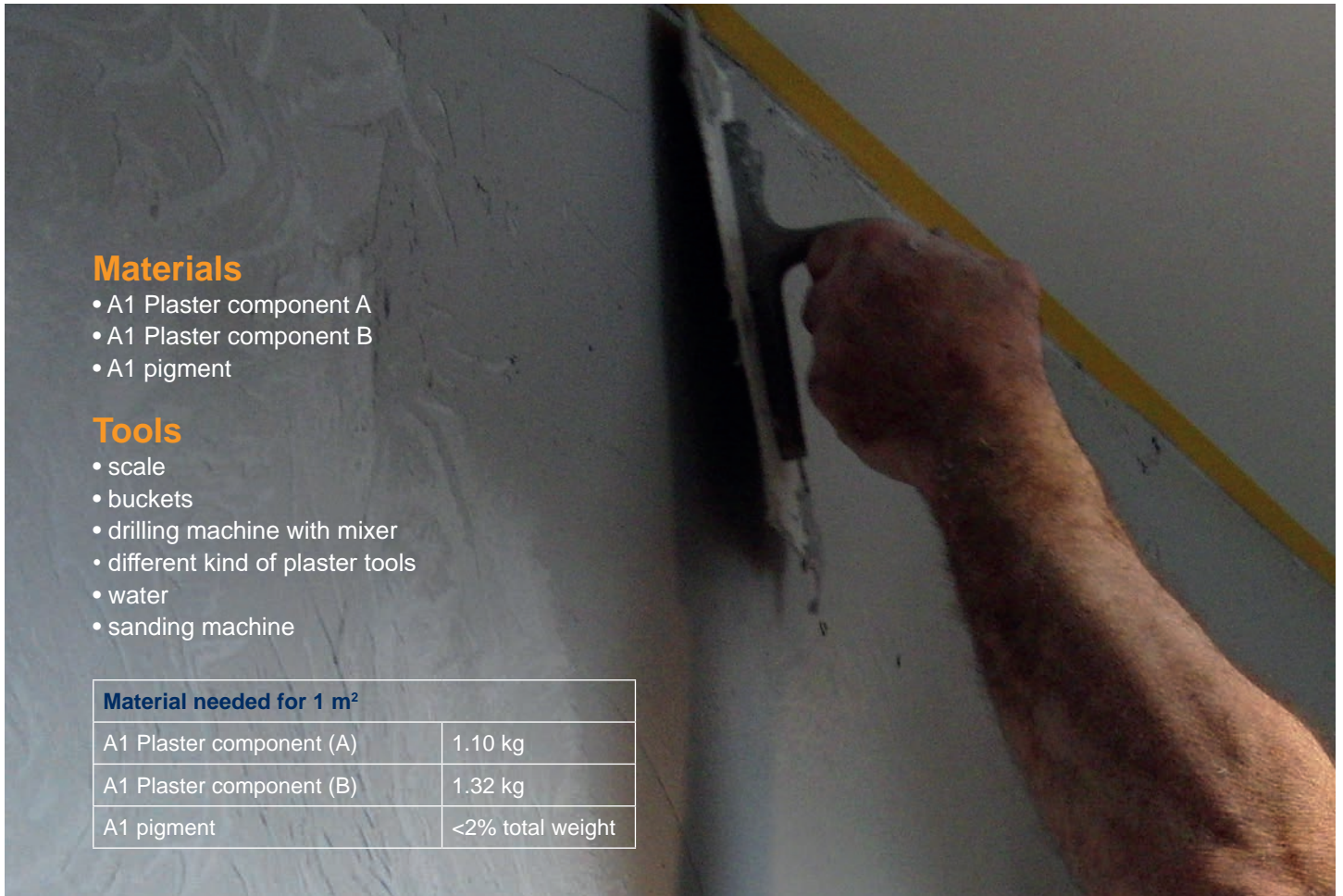
- A1 Plaster component A
- A1 Plaster component B
- A1 pigment

### Tools

- scale
- buckets
- drilling machine with mixer
- different kind of plaster tools
- water
- sanding machine

#### Material needed for 1 m<sup>2</sup>

A1 Plaster component (A)	1.10 kg
A1 Plaster component (B)	1.32 kg
A1 pigment	<2% total weight



1

Make sure the surface is smooth. Then apply a stuc primer onto the surface.



2

Weigh the correct amount of Component A (1 part in weight) and Component B (1.2 part in weight) + 2% colour pigment of your choice.



3

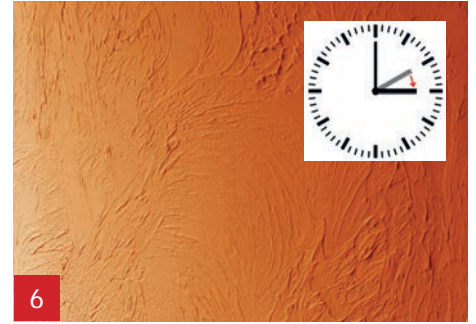
Mix Component B with Component A with the High Shear mixer till all lumps have disappeared (approx. 2 minutes).



Apply a 1<sup>st</sup> layer of A1 Plaster using a stucco and level it (approx. 1 mm thickness).



Use a stucco to create some structure (or any other tool) in the 1<sup>st</sup> A1 Plaster layer. Processing time is max. 1 hour.



Result: 1<sup>st</sup> layer of A1 Plaster. It's possible to scrape off the sharp upright edges...



... with a Chinese knife before the 1 hour curing time. This will save a lot of sanding.



After curing (approx. 1 hour) lightly sand the surface with P80 sandpaper.



Result after sanding the 1<sup>st</sup> layer. Directly after sanding, the 2<sup>nd</sup> layer of A1 Plaster can be applied.



Mix a new quantity of A1 Plaster and apply a 2<sup>nd</sup> layer onto the surface and level it. You can use the same or a different colour.



After curing (approx. 1 hour) sand the 2<sup>nd</sup> layer with P120 (fine) sandpaper until you have a smooth surface.



Result after sanding for the 2<sup>nd</sup> time.



Last step is to apply the A1 Sealer.



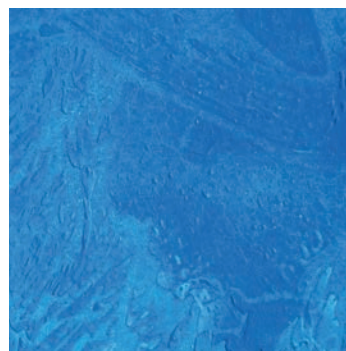
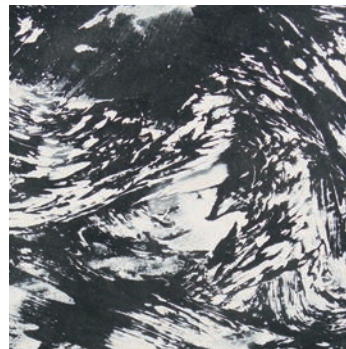
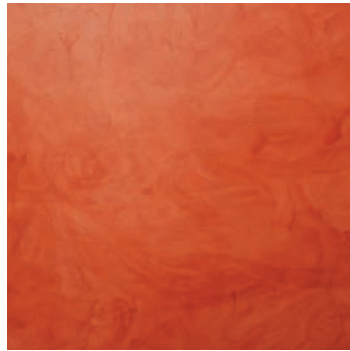
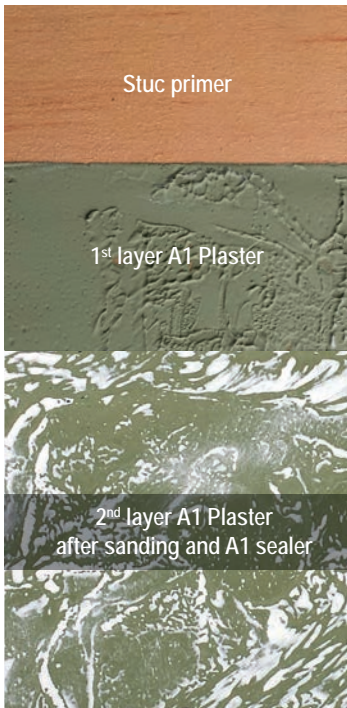
Use a cloth or sponge. Apply A1 sealer, diluted with 30% of water, and immediately wipe out with a clean dry cloth. After drying repeat the process for 2<sup>nd</sup> layer.



Result of this surface finish. Of course, different colour shades are possible.



## Examples



This image shows a full page of blank, lined paper. It features approximately 20 evenly spaced horizontal blue lines across its entire width. The paper is otherwise completely empty, with no margins, text, or other markings.

Mani Sampaio 47 Neil Street Bundeena N.S.W. 2230 Australia  
T: +61456471883 | Email: mani.amtau@gmail.com